

OFFICE, RETAIL &
MEDICAL SPACE
FOR LEASE

Waterford Park Office/Retail

12301 Lake Underhill Rd. Orlando, FL 32828



OFFICES FROM
**±950 to
±3,278 SF**

Space Available in East Orlando's Best Office & Retail Location

A full amenity styled development located directly on the corner of Lake Underhill Rd and Alafaya Trail at the entrance of Waterford Lakes. Also serving Avalon Park, Stoneybrook, Eastwood and Oviedo. Close to 408 and 4 miles from UCF.

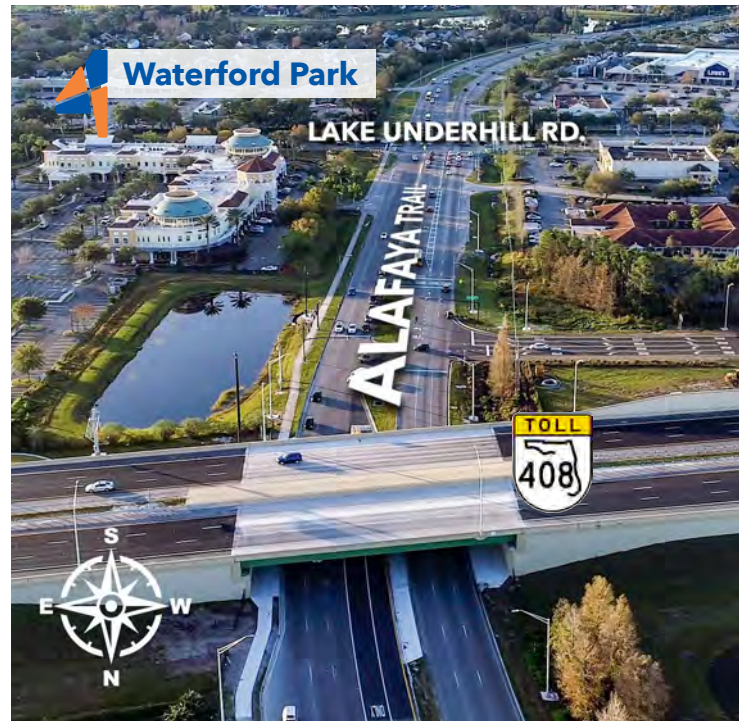
Property Details

Building Size	:	±116,728 SF
Type:		Office /Medical/Retail
Stories:		2
Year Built / Age:		2005
Signage:		Building & Monument

Property Highlights

- Immediate Hwy-408 access
- Well-traveled high-traffic location
- Multiple monument signs
- Newly renovated
- Prime restaurant space opportunities

Location



PRESENTED BY

Samuel Gaslin

SAM@4ACRE.COM | 904.505.5282

Solomon Attaway

SOLOMON@4ACRE.COM | 407.274.9142

CALL
FOR MORE
INFORMATION

4 Acre Commercial Real Estate (4 Acre) does not represent or warranty the accuracy of the information contained herein. Such information has been given to 4 Acre by the owner of the property or obtained from other sources deemed reliable. 4 Acre has no reason to doubt its accuracy, but does not guarantee it. The reviewer(s) of this document is encouraged to perform their own research to verify the dependability of the information being reviewed. All information should be verified by reviewer(s) prior to purchase or lease. Unless otherwise noted, the property is being offered as-is, where is, with all faults.

PROPERTY
PHOTOS

Waterford Park Office/Retail

12301 Lake Underhill Rd. Orlando, FL 32828



PRESENTED BY

Samuel Gaslin

SAM@4ACRE.COM | 904.505.5282

Solomon Attaway

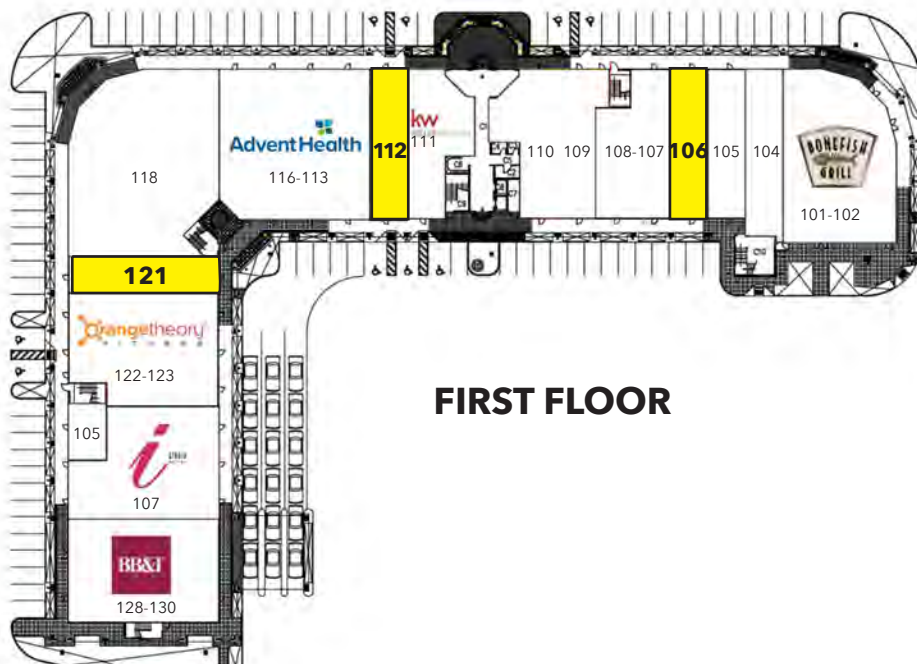
SOLOMON@4ACRE.COM | 407.274.9142

CALL
FOR MORE
INFORMATION

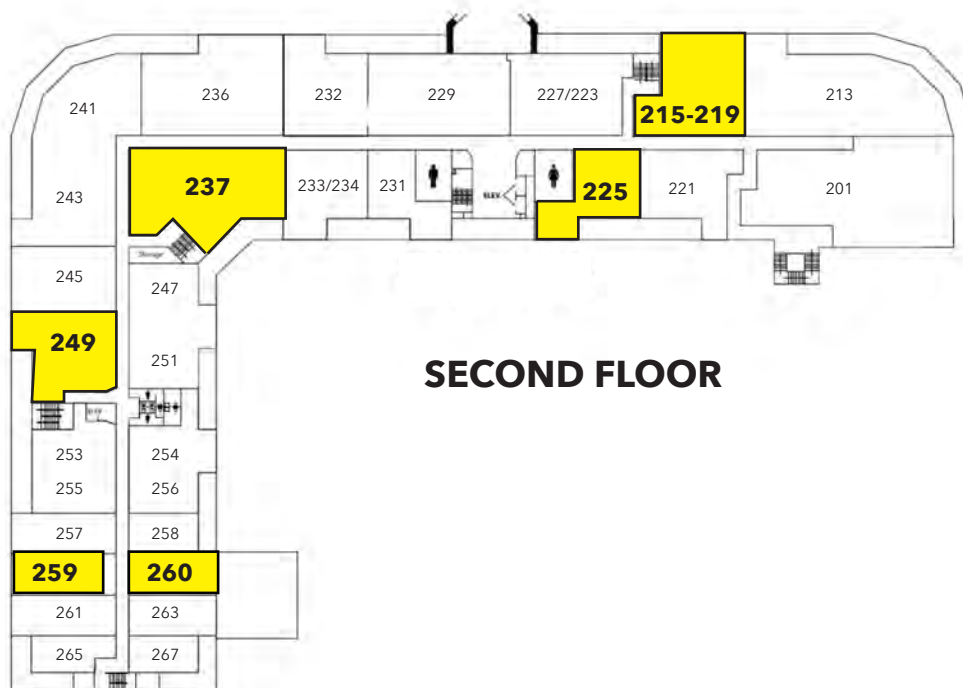
4 Acre Commercial Real Estate (4 Acre) does not represent or warranty the accuracy of the information contained herein. Such information has been given to 4 Acre by the owner of the property or obtained from other sources deemed reliable. 4 Acre has no reason to doubt its accuracy, but does not guarantee it. The reviewer(s) of this document is encouraged to perform their own research to verify the dependability of the information being reviewed. All information should be verified by reviewer(s) prior to purchase or lease. Unless otherwise noted, the property is being offered as-is, where is, with all faults.

ALAFAYA TRAIL

LAKE UNDERHILL RD.



FIRST FLOOR



SECOND FLOOR

Suite 101-103	Bonefish Grill
Suite 104	Orlando Endotics
Suite 105	Hanger Prosthetics
Suite 106	Available-COBideal Image
Suite 107/108	Orlando Periodontics
Suite 109/110	Natus
Suite 111	Keller Williams
Suite 112	1,834 SF Available
Suite 113-116	Florida Radiology Imaging
Suite 118	Mini ER
Suite 121	1,796 SF Available
Suite 122-123	Orange Theory Fitness
Suite 125	Hand and Foot Spa
Suite 127	iStudio Salons
Suite 128-130	BB&J

Suite 201	Natus
Suite 213	The Orlando Law Group
Suite 215-219	2,584 SF Available
Suite 221	First American Title
Suite 223/227	Women's Care Florida
Suite 225	1,639 SF Available
Suite 229	Keller Williams
Suite 231	Fidelity Title
Suite 232	Keller Williams
Suite 233/234	Engle Martin
Suite 236	Visual Health
Suite 237	3,278 SF Available
Suite 241-243	Dave Schmitt Engineering
Suite 245	East Orlando Chamber of Commerce
Suite 249	1,915 SF Avail. 3/31/21
Suite 247-251	TOPdesk USA
Suite 255	TOPdesk USA
Suite 254-256	22 Health
Suite 257	Premier Tax & Accounting
Suite 258	Fairway Mortgage
Suite 259	1,059 RSF Available
Suite 260	950 RSF Available
Suite 261	The Thompson Agency
Suite 263	Paramont Mortgage
Suite 265	Law Firm
Suite 267	Anchored Therapeutic Services

PRESENTED BY

Samuel Gaslin

SAM@4ACRE.COM | 904.505.5282

Solomon Attaway

SOLOMON@4ACRE.COM | 407.274.9142

CALL
FOR MORE
INFORMATION

SUITE
LOCATION

Waterford Park Office/Retail
12301 Lake Underhill Rd. Orlando, FL 32828



First Floor Suites



Suite 112

±1,834 RSF

(All Measurements are Approximate)

Second Generation
Office Space



Suite 121

±1,796 RSF

(All Measurements are Approximate)

Second Generation
Medical Space

PRESENTED BY

Samuel Gaslin

SAM@4ACRE.COM | 904.505.5282

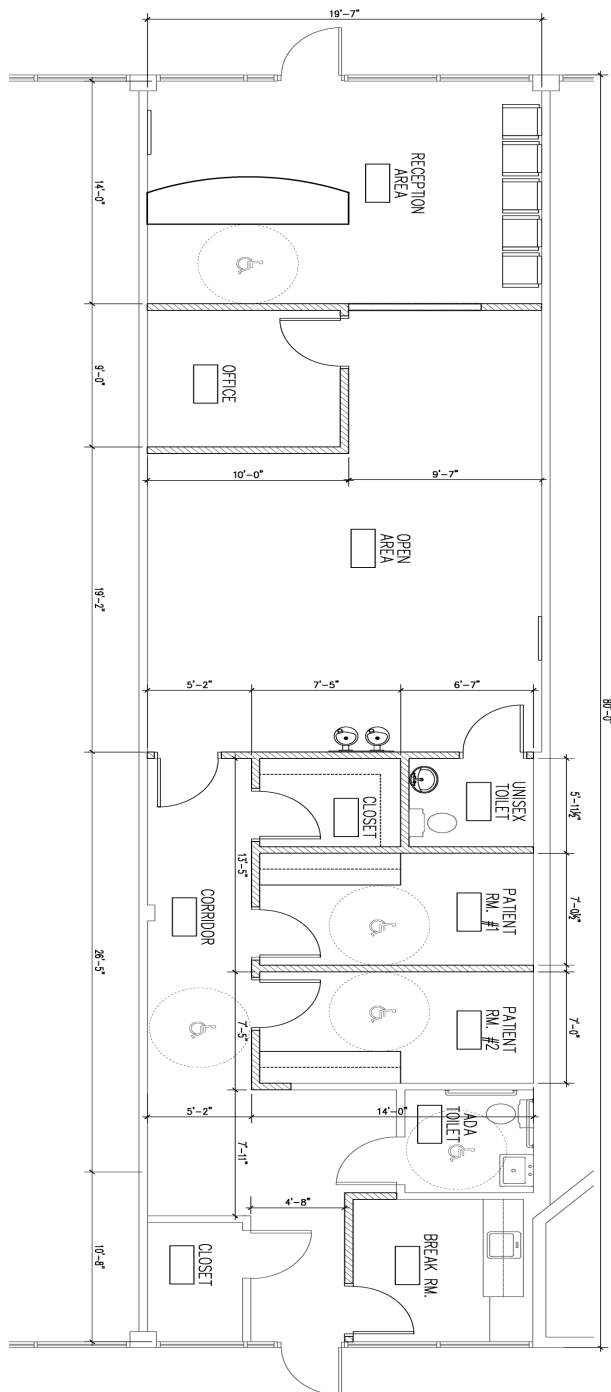
Solomon Attaway

SOLOMON@4ACRE.COM | 407.274.9142

CALL
FOR MORE
INFORMATION

4 Acre Commercial Real Estate (4 Acre) does not represent or warranty the accuracy of the information contained herein. Such information has been given to 4 Acre by the owner of the property or obtained from other sources deemed reliable. 4 Acre has no reason to doubt its accuracy, but does not guarantee it. The reviewer(s) of this document is encouraged to perform their own research for their own purposes to verify the dependability of the information being reviewed. All information should be verified by reviewer(s) prior to purchase or lease. Unless otherwise noted, the property is being offered as-is, where is, with all faults.

Floor Plan



Suite 121

±1,796 RSF

(All Measurements are Approximate)

Second Generation Medical Space

PRESENTED BY

Samuel Gaslin

SAM@4ACRE.COM | 904.505.5282

Solomon Attaway

SOLOMON@4ACRE.COM | 407.274.9142

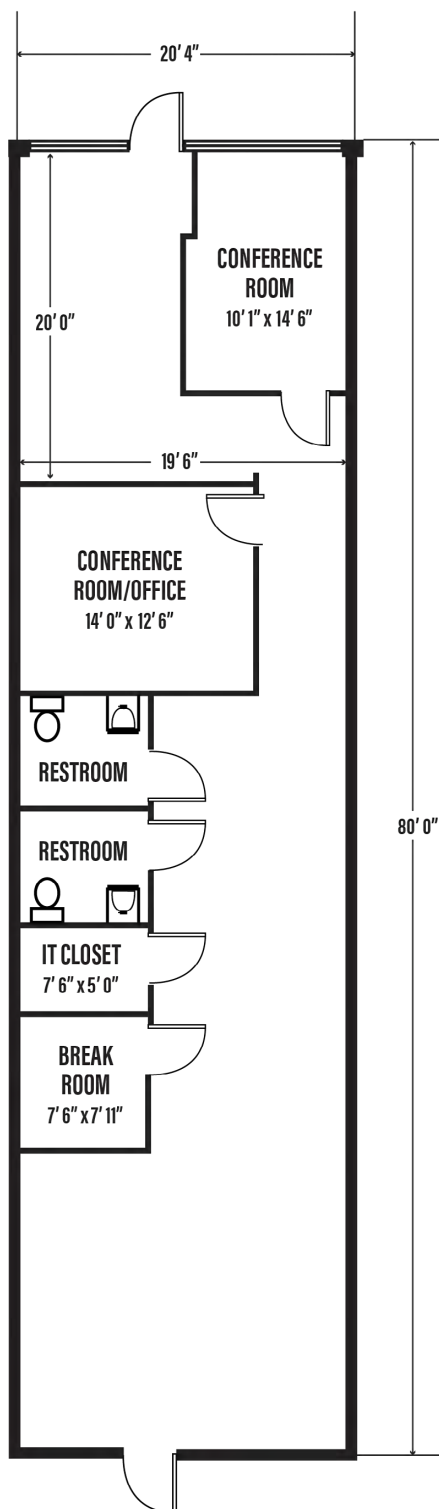
CALL
FOR MORE
INFORMATION

FLOOR
PLANS

Waterford Park Office/Retail
12301 Lake Underhill Rd. Orlando, FL 32828



Floor Plan



Suite 112

±1,834 RSF

(All Measurements are Approximate)

**Second Generation
Office Space**

PRESENTED BY

Samuel Gaslin

SAM@4ACRE.COM | 904.505.5282

Solomon Attaway

SOLOMON@4ACRE.COM | 407.274.9142

**CALL
FOR MORE
INFORMATION**

SUITE
LOCATION

Waterford Park Office/Retail

12301 Lake Underhill Rd. Orlando, FL 32828



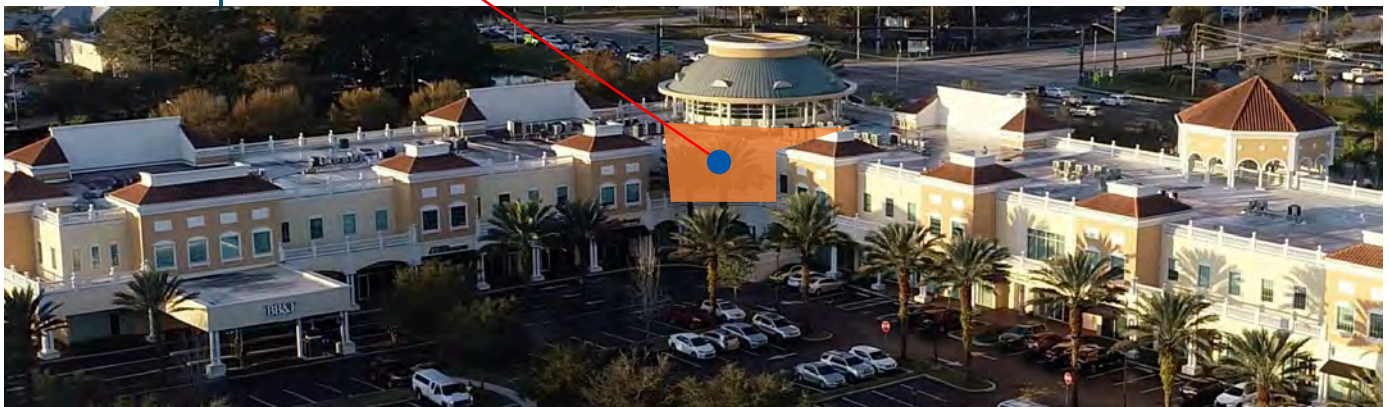
Suites 215-219 | $\pm 2,584$ RSF



Suite 225 | $\pm 1,639$ RSF



Suites 237 | $\pm 3,278$ RSF



PRESENTED BY

Samuel Gaslin

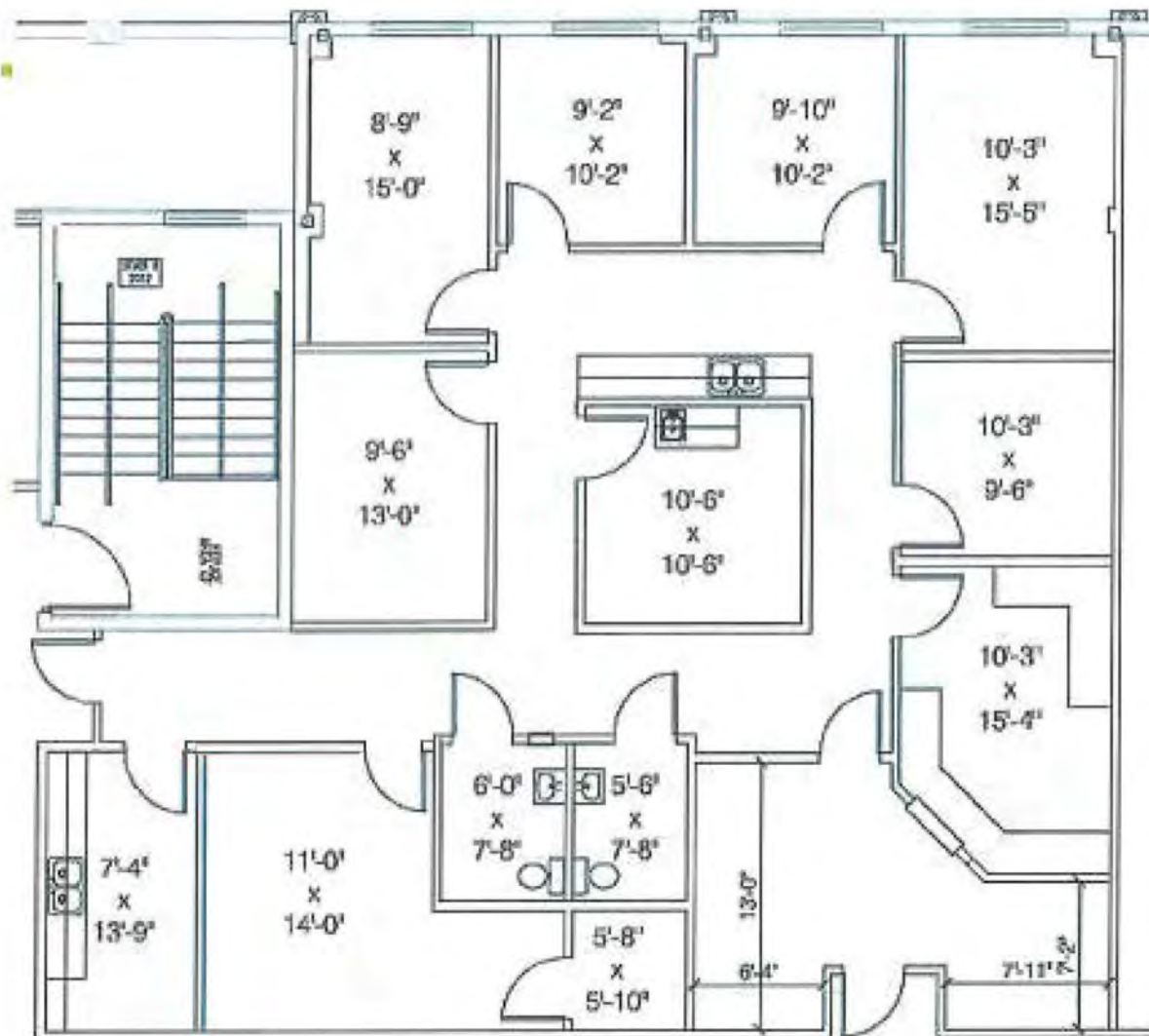
SAM@4ACRE.COM | 904.505.5282

Solomon Attaway

SOLOMON@4ACRE.COM | 407.274.9142

CALL
FOR MORE
INFORMATION

4 Acre Commercial Real Estate (4 Acre) does not represent or warranty the accuracy of the information contained herein. Such information has been given to 4 Acre by the owner of the property or obtained from other sources deemed reliable. 4 Acre has no reason to doubt its accuracy, but does not guarantee it. The reviewer(s) of this document is encouraged to perform their own research for their own purposes to verify the dependability of the information being reviewed. All information should be verified by reviewer(s) prior to purchase or lease. Unless otherwise noted, the property is being offered as-is, where is, with all faults.



Suites 215-219

±2,584 RSF

(All Measurements are Approximate)

PRESENTED BY

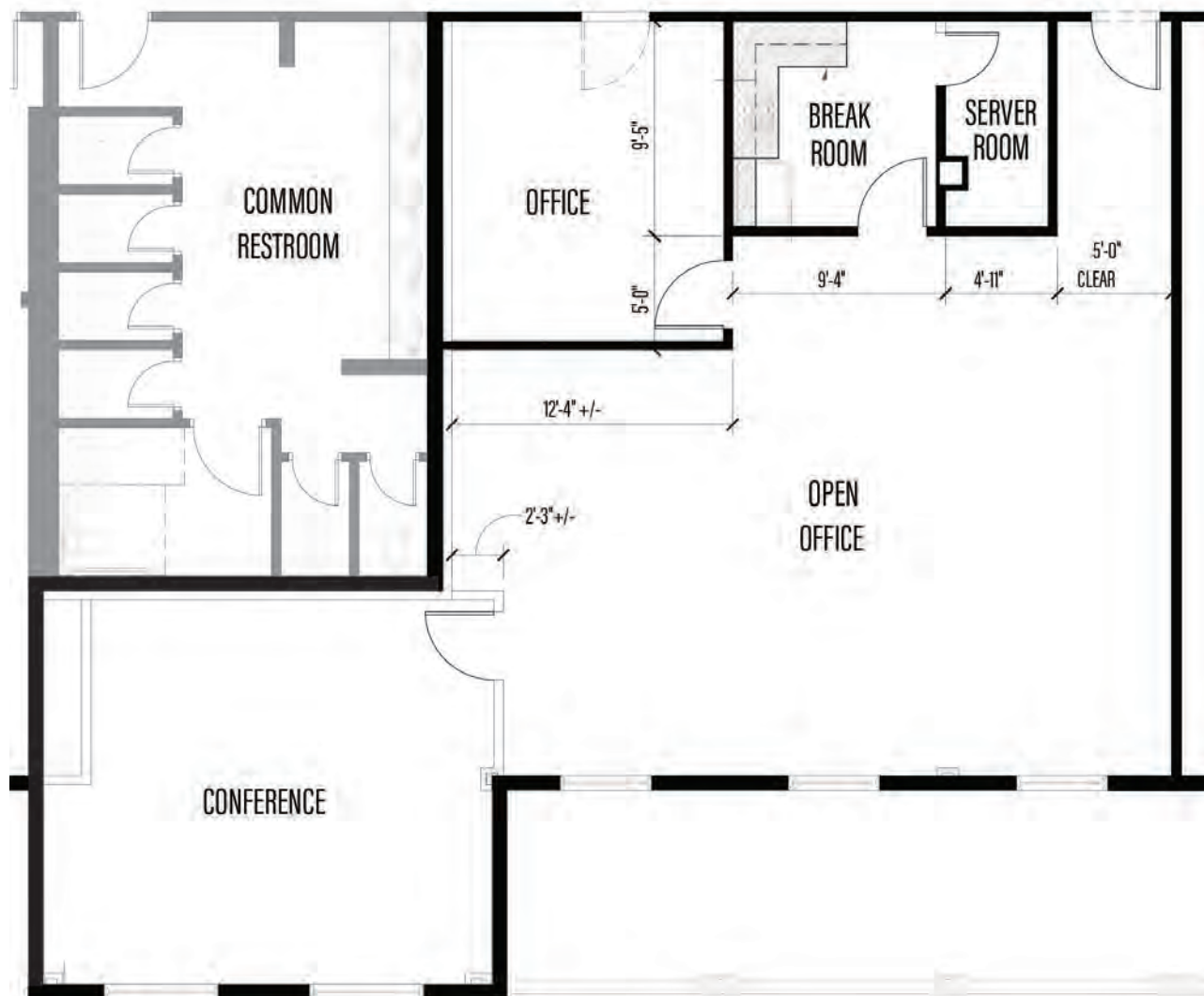
Samuel Gaslin

SAM@4ACRE.COM | 904.505.5282

Solomon Attaway

SOLOMON@4ACRE.COM | 407.274.9142

CALL
FOR MORE
INFORMATION



Suite 225

±1,639 RSF

(All Measurements are Approximate)

PRESENTED BY

Samuel Gaslin

SAM@4ACRE.COM | 904.505.5282

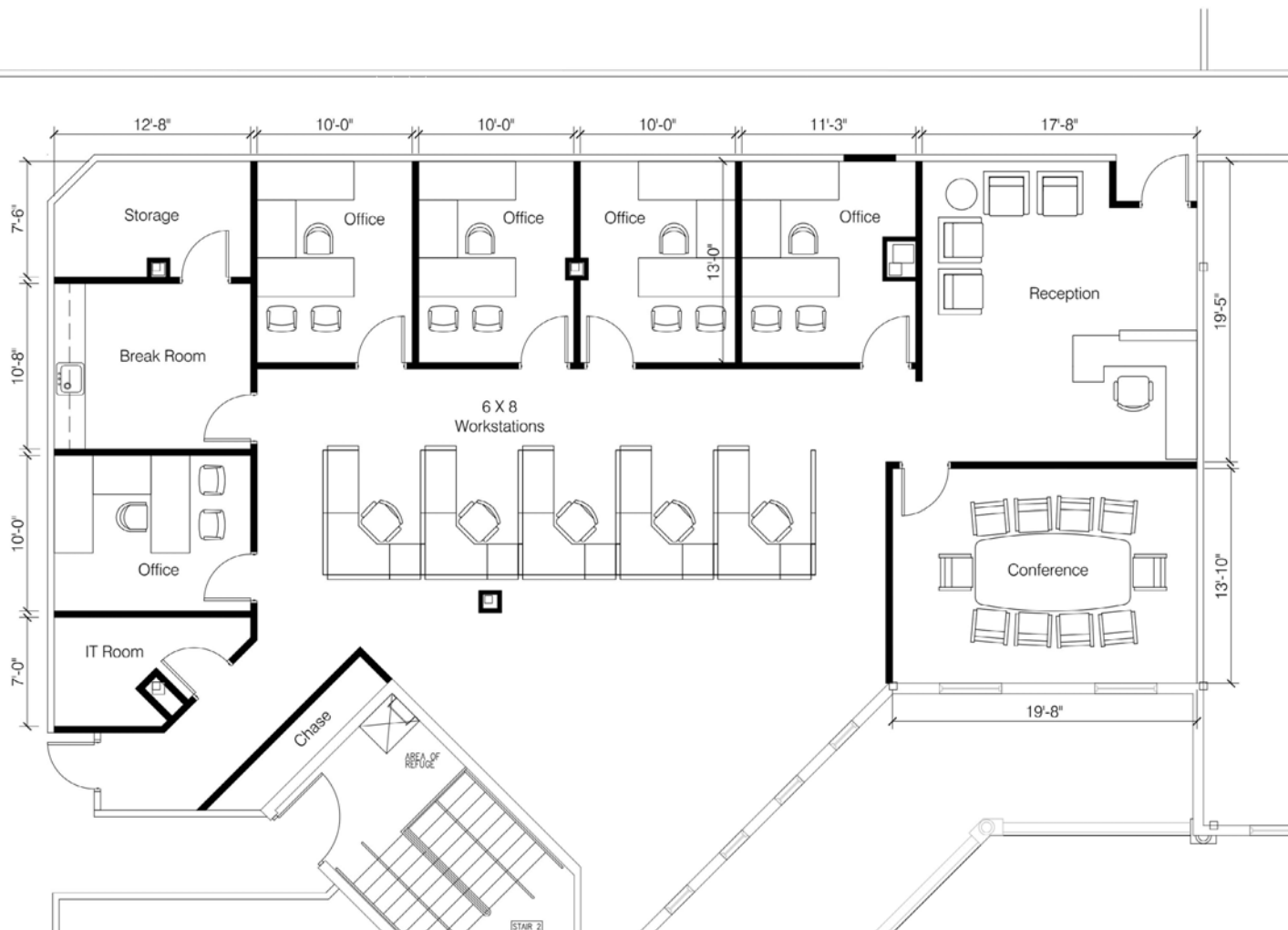
Solomon Attaway

SOLOMON@4ACRE.COM | 407.274.9142

CALL
FOR MORE
INFORMATION

FLOOR
PLANS

Waterford Park Office/Retail
12301 Lake Underhill Rd. Orlando, FL 32828



Suite 237

±3,278 RSF

(All Measurements are Approximate)

PRESENTED BY

Samuel Gaslin

SAM@4ACRE.COM | 904.505.5282

Solomon Attaway

SOLOMON@4ACRE.COM | 407.274.9142

CALL
FOR MORE
INFORMATION

SUITE
LOCATION

Waterford Park Office/Retail

12301 Lake Underhill Rd. Orlando, FL 32828



Suite 260 | ±950 RSF



Suite 249 | ±1,915 RSF



PRESENTED BY

Samuel Gaslin

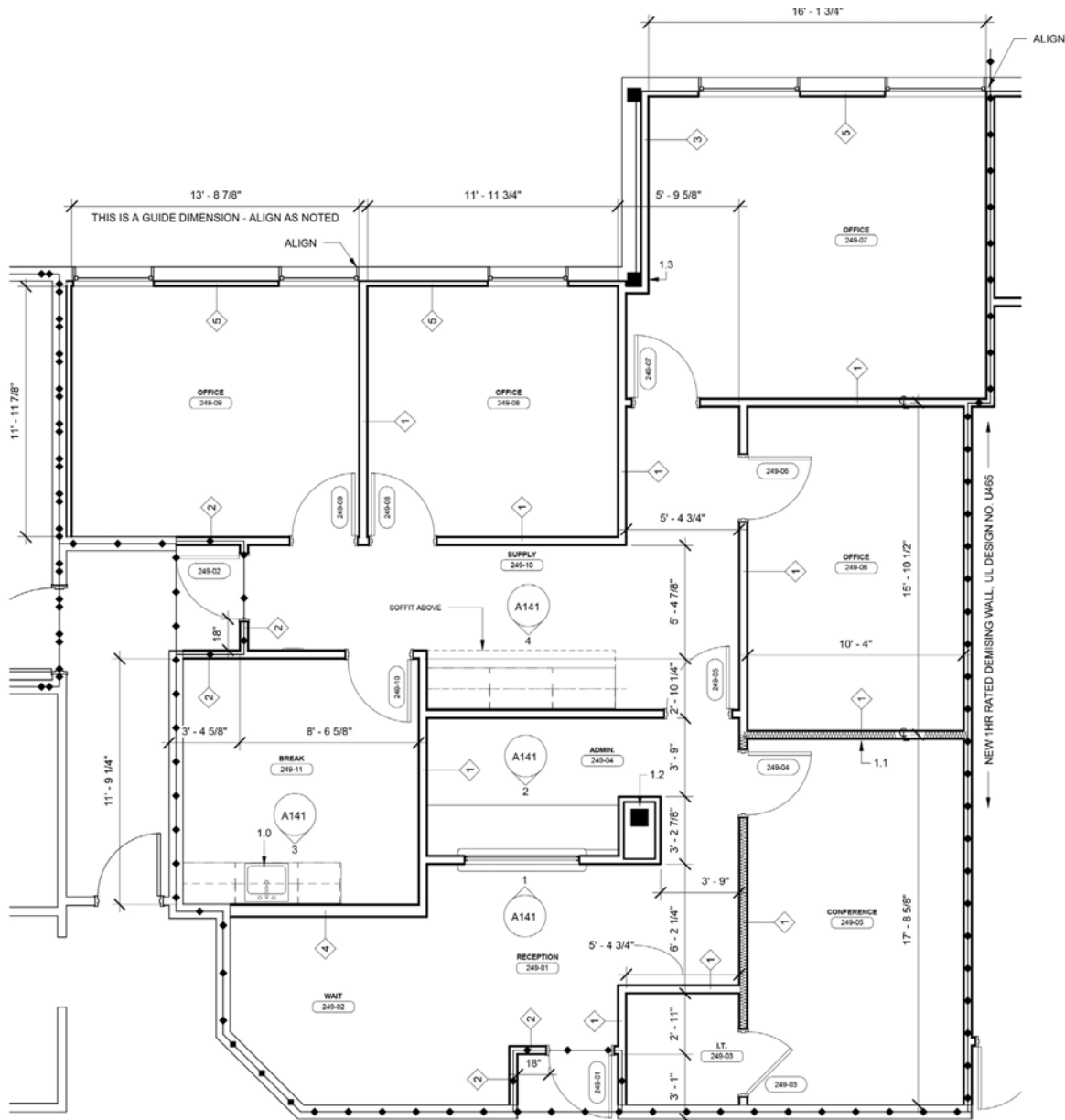
SAM@4ACRE.COM | 904.505.5282

Solomon Attaway

SOLOMON@4ACRE.COM | 407.274.9142

CALL
FOR MORE
INFORMATION

4 Acre Commercial Real Estate (4 Acre) does not represent or warranty the accuracy of the information contained herein. Such information has been given to 4 Acre by the owner of the property or obtained from other sources deemed reliable. 4 Acre has no reason to doubt its accuracy, but does not guarantee it. The reviewer(s) of this document is encouraged to perform their own research for their own purposes to verify the dependability of the information being reviewed. All information should be verified by reviewer(s) prior to purchase or lease. Unless otherwise noted, the property is being offered as-is, where is, with all faults.



Suite 249

±1,915 RSF

(All Measurements are Approximate)

PRESENTED BY

Samuel Gaslin

SAM@4ACRE.COM | 904.505.5282

Solomon Attaway

SOLOMON@4ACRE.COM | 407.274.9142

CALL
FOR MORE
INFORMATION

AERIAL
MAP

Waterford Park Office/Retail

12301 Lake Underhill Rd. Orlando, FL 32828



Points of Interest Map



PRESENTED BY

Samuel Gaslin

SAM@4ACRE.COM | 904.505.5282

Solomon Attaway

SOLOMON@4ACRE.COM | 407.274.9142

CALL
FOR MORE
INFORMATION

4 Acre Commercial Real Estate (4 Acre) does not represent or warranty the accuracy of the information contained herein. Such information has been given to 4 Acre by the owner of the property or obtained from other sources deemed reliable. 4 Acre has no reason to doubt its accuracy, but does not guarantee it. The reviewer(s) of this document is encouraged to perform their own research to verify the dependability of the information being reviewed. All information should be verified by reviewer(s) prior to purchase or lease. Unless otherwise noted, the property is being offered as-is, where is, with all faults.

AERIAL MAP



PRESENTED BY

Samuel Gaslin

SAM@4ACRE.COM | 904.505.5282

Solomon Attaway

SOLOMON@4ACRE.COM | 407.274.9142

CALL
FOR MORE
INFORMATION

4 Acre Commercial Real Estate (4 Acre) does not represent or warranty the accuracy of the information contained herein. Such information has been given to 4 Acre by the owner of the property or obtained from other sources deemed reliable. 4 Acre has no reason to doubt its accuracy, but does not guarantee it. The reviewer(s) of this document is encouraged to perform their own research to verify the dependability of the information being reviewed. All information should be verified by reviewer(s) prior to purchase or lease. Unless otherwise noted, the property is being offered as-is, where is, with all faults.